

# Gas Engineering

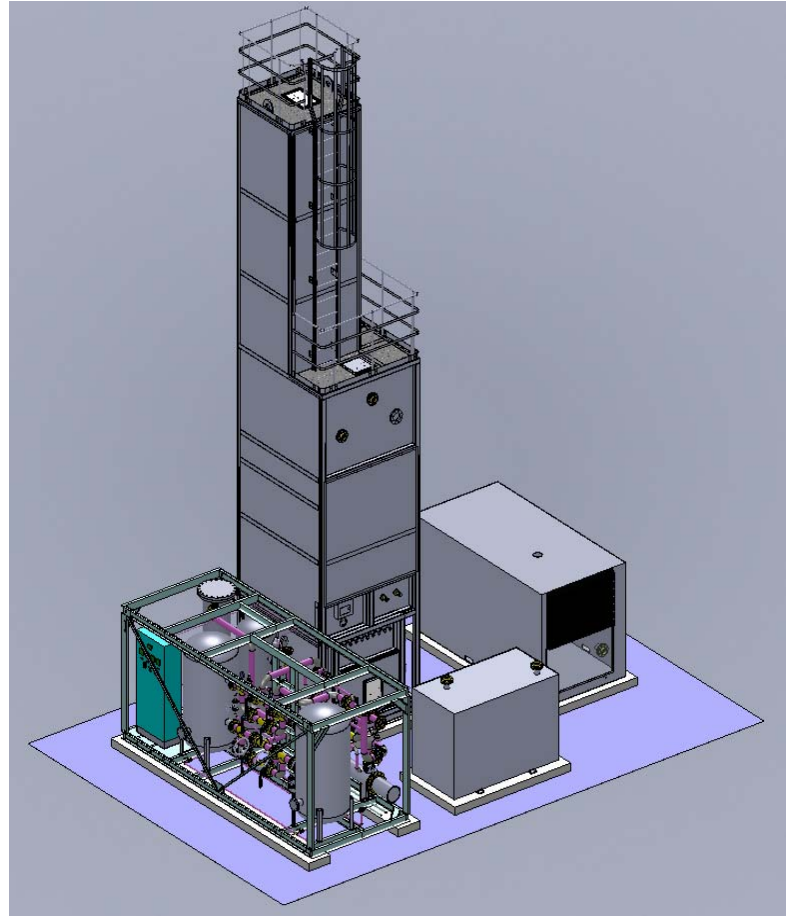
Cryogenic Process Systems

## GAN LA Series

Nitrogen Generating Plant  
500-1000 Nm<sup>3</sup>/hr



The LA Series Nitrogen Generator is a "liquid assist" type system wherein process refrigeration is supplied by a small external source of liquid nitrogen instead of by expansion, thereby eliminating the need for a turboexpander. This process is especially attractive where liquid backup is required. The plant is a modular, "packaged" type plant furnished in four pre-assembled modules: feed air compressor, air chiller, pre-purifier and cold box. Standard production capacities: 500 to 1000 Nm<sup>3</sup>/hr.

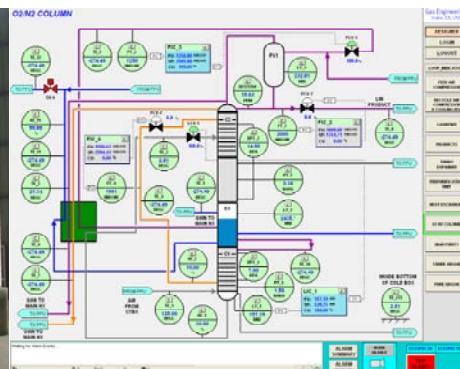


### Features

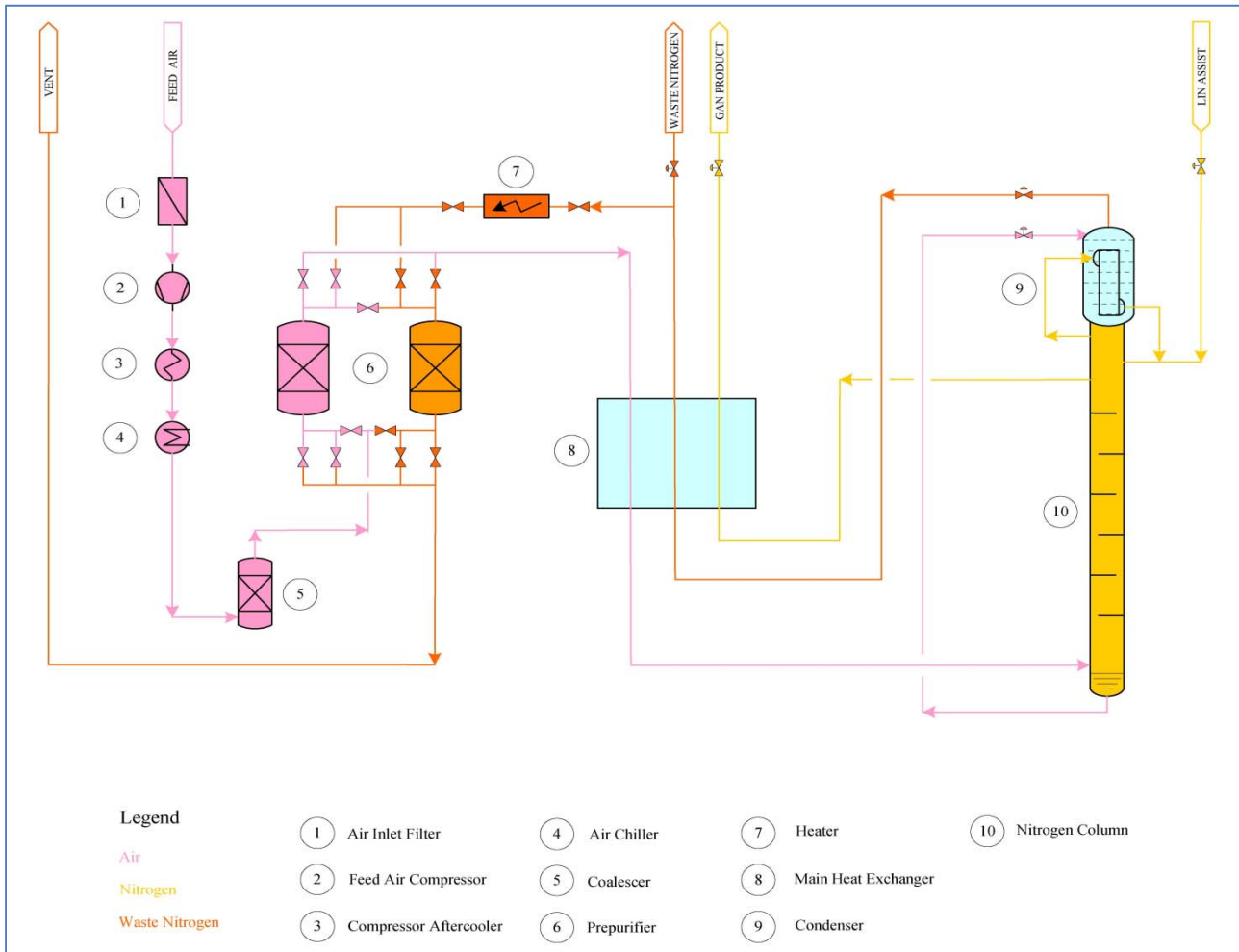
- **State-of-the-art process** with low specific power
- **Completely air cooled** – no cooling water required
- **Modular design** facilitates installation and minimizes installation cost and shipping cost – ships in three standard 40' HC ISO containers.
- **State-of-the-art control** system provides fully automated operation, remote access capability
- **Plot space** as low as 6.1mx6.1m (20'x20')

### Plant Options

- Prefabricated Interconnecting Piping
- Containerized Configuration
- ASME/CE certification
- CO<sub>2</sub> and THC analyzers
- On-site assistance – installation, start-up



# Gas Engineering



Model		GAN 500LA	GAN 1000LA
<b>Production</b>			
<b>Nitrogen (GAN)</b>	Nm3/hr	576	1066
	SCFH	21,913	40,571
<b>LIN Add</b>	Nm3/hr	31	50
	SCFH	1,179	1,902
<b>Purity</b>			
<b>Nitrogen (GAN)</b>	PPM O <sub>2</sub> , Max	5	5
<b>Utilities</b>			
<b>Power</b>	kW	190	340
<b>Cooling Water</b>	lpm	Not Required	
<b>Specific Power</b>	kW-hr/Nm <sup>3</sup>	0.329	0.319

## Gas Engineering LLC

2151 Michelson Drive, Suite 285

Irvine, CA 92612

USA

Rev. B

Phone: +1 949 250 0030

Fax: +1 949 250 0031

E-mail: [info@gaseng.net](mailto:info@gaseng.net)

[www.gaseng.net](http://www.gaseng.net)