

# Gas Engineering

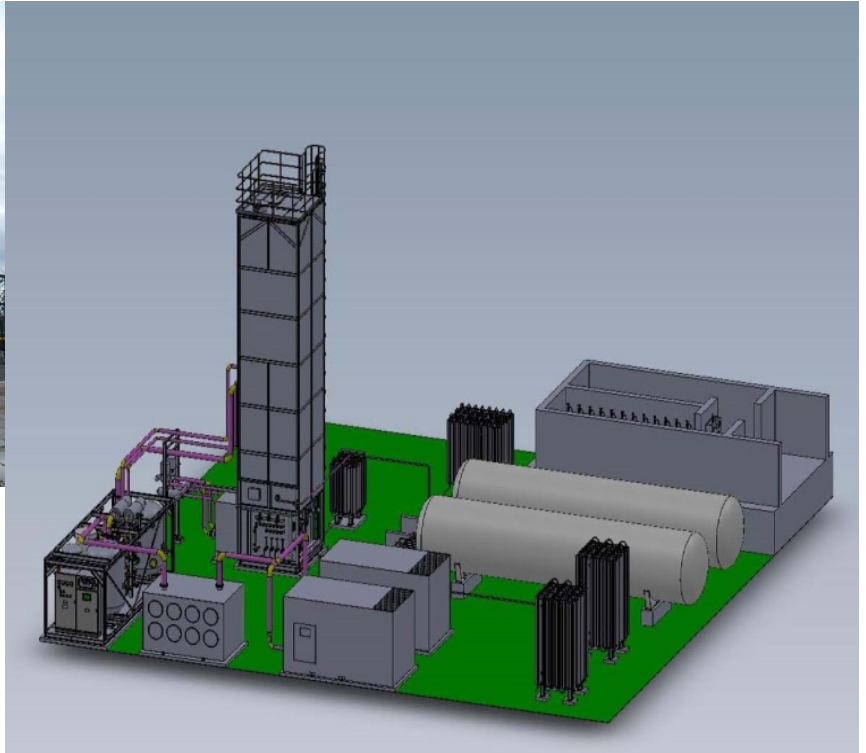
Cryogenic Process Systems

## Model 2L300

Liquid Oxygen/Nitrogen Generating Plant  
300 Nm<sup>3</sup>/hr



The 2L300 is a modular, air-cooled, “packaged” type plant furnished in five pre-assembled modules: dual feed air compressors, air chiller, pre-purifier and cold box. The dual – warm and cold – turboexpander system provides highest plant efficiency available in this plant size range

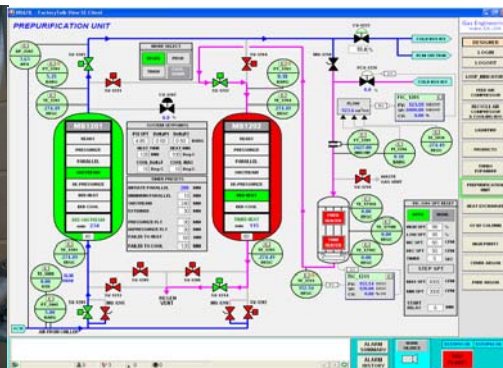


### Features

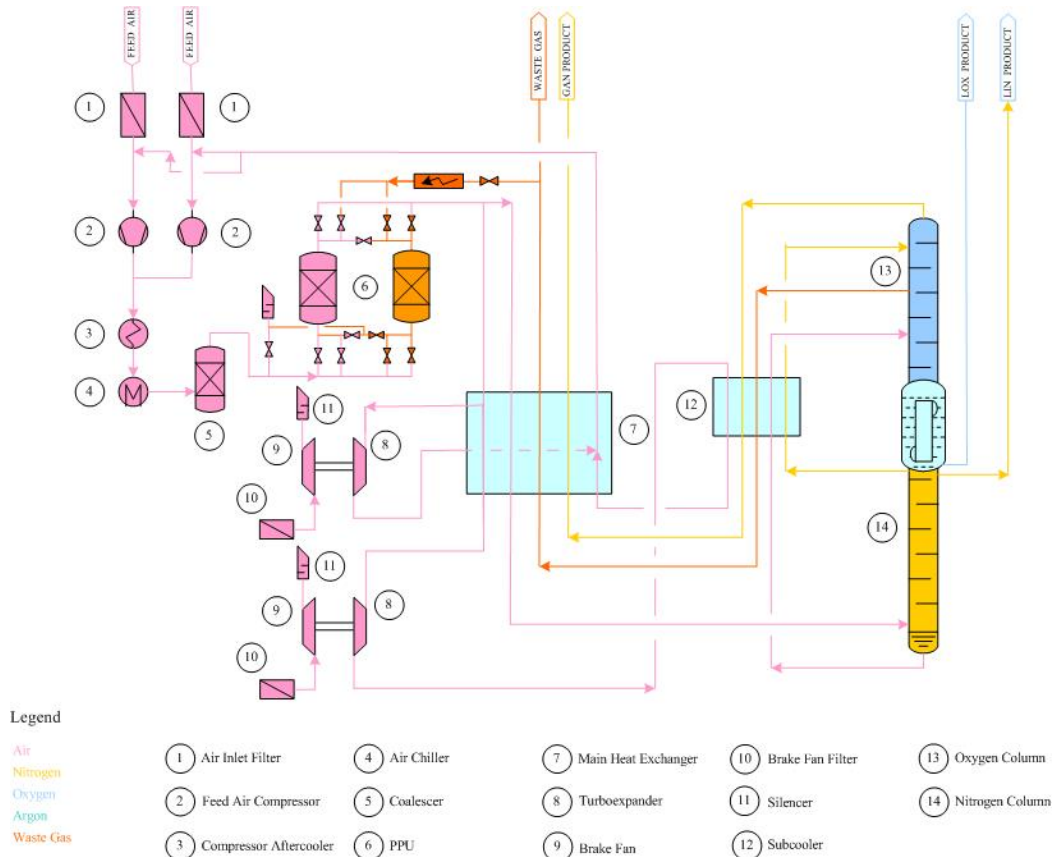
- **State of the art process** with lowest specific power consumption for this plant capacity class
- **Completely air cooled** – no cooling water required
- **Modular design** facilitates installation and minimizes installation cost and shipping cost – ships in five standard ISO shipping containers, assembles in less than two weeks.
- State-of-the-art Gas Engineering **GEX Control System** provides fully automated operation and remote access capability

### Plant Options

- LOX and LIN Storage Tanks
- High Pressure Gas Cylinder Filling System
- Prefabricated Interconnecting Piping
- Containerized Configuration
- ASME/CE certification
- On-site assistance for installation & start-up



# Gas Engineering



	Units	Maximum LOX Mode		Maximum LIN Mode
		Expected	Guaranteed	Expected
<b>Production</b>				
Liquid Oxygen	Nm3/hr	340	314	
Liquid Nitrogen	Nm3/hr			434
Gaseous Nitrogen	Nm3/hr	300		
<b>Purity</b>				
Liquid Oxygen	%O <sub>2</sub> , min	99.6		
Nitrogen (gas or liquid)	PPM O <sub>2</sub> , max	5		5
<b>Temperature</b>				
Liquid Oxygen	K	94		
Liquid Nitrogen	K			89
Gaseous Nitrogen	K	275		
<b>Pressure</b>				
Liquid Oxygen	Bar(A)	1.5		
Liquid Nitrogen	Bar(A)			5.0
Gaseous Nitrogen	Bar(A)	1.105		
<b>Utilities</b>				
Power (Avg. Consumption)	KW	697		697
<b>Specific Power</b>	kW-hr/Nm <sup>3</sup>	2.05	2.22	1.61

## Gas Engineering LLC

2151 Michelson Drive, Suite 285  
Irvine, CA 92612  
USA  
Rev. C

Phone: +1 949 250 0030  
Fax: +1 949 250 0031  
E-mail: [info@gaseng.net](mailto:info@gaseng.net)  
[www.gaseng.net](http://www.gaseng.net)