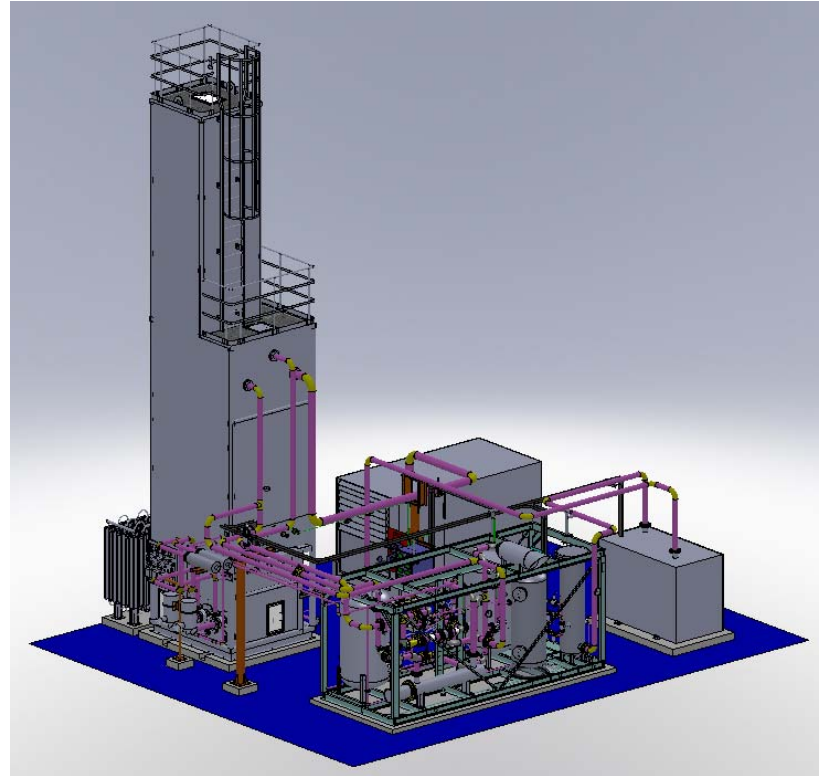


# Gas Engineering

Cryogenic Process Systems

## Model 1L Series

Liquid Oxygen/Nitrogen Generating Plant  
120-200 Nm<sup>3</sup>/hr



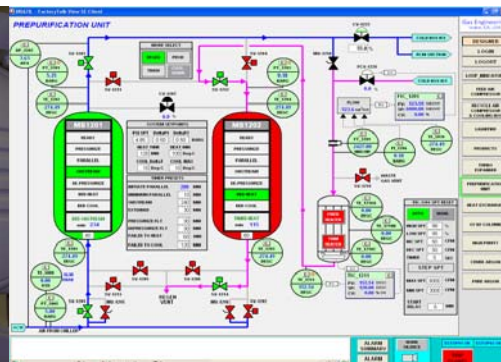
The 1L Series is a modular, “packaged” type plant furnished in four pre-assembled modules: feed air compressor, air chiller, pre-purifier and cold box. Three standard models are available with production capacities of 120 to 200 Nm<sup>3</sup>/hr.

### Features

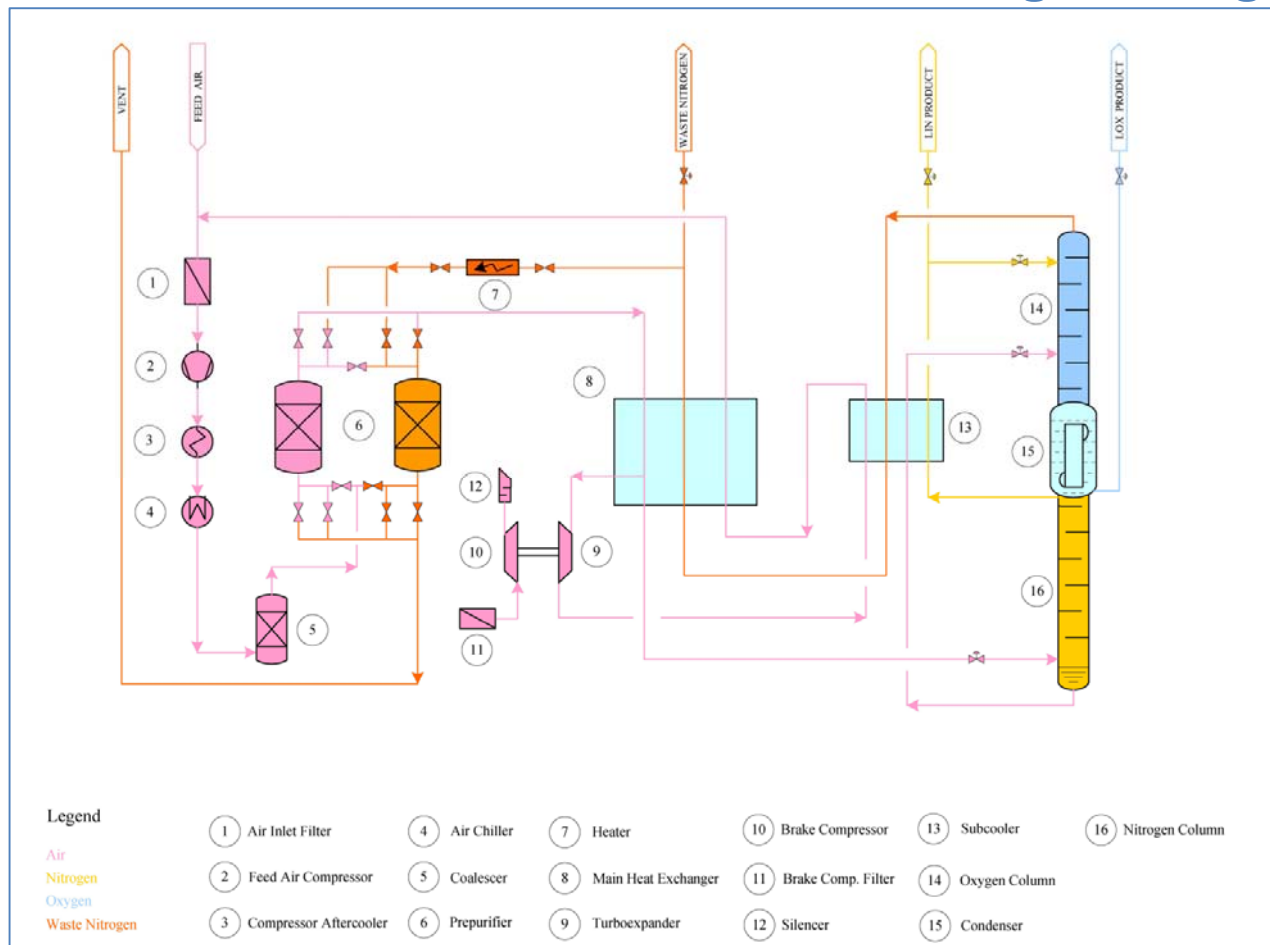
- **State of the art process** with lowest specific power consumption for this plant capacity class
- **Completely air cooled** – no cooling water required
- **Modular design** facilitates installation and minimizes installation cost and shipping cost – ships in three standard 40’ HC ISO containers.
- **Stable, reliable plant control system** – automated compressor and chiller control; manual plant control provides reliability and simplicity; automated plant control is available as an option

### Plant Options

- Automated Process Control
- LOX and LIN Storage Tanks
- High Pressure Gas Cylinder Filling System
- Prefabricated Interconnecting Piping
- Containerized Configuration
- ASME/CE certification
- On-site assistance – installation, start-up



# Gas Engineering



<b>Model</b>		<b>1L120</b>		<b>1L160</b>		<b>1L200</b>	
Operating Mode		Maximum Oxygen	Maximum Nitrogen	Maximum Oxygen	Maximum Nitrogen	Maximum Oxygen	Maximum Nitrogen
<b>Production</b>							
Liquid Oxygen	Nm3/hr	131		182		219	
	MTPD	4.5		6.2		7.5	
Liquid Nitrogen	Nm3/hr		165		233		282
	MTPD		4.95		7.0		8.5
<b>Purity</b>							
Liquid Oxygen	% O2, Min	99.6		99.6		99.6	
Liquid Nitrogen	PPM O2, Max		5		5		5
<b>Utilities</b>							
Power	kW	300	300	400	400	493	493
Cooling Water	lpm			Not Required			
Specific Power	kW-hr/Nm3	2.28	1.81	2.20	1.71	2.25	1.75

## Gas Engineering LLC

2151 Michelson Drive, Suite 285  
Irvine, CA 92612  
USA  
Rev. B

Phone: +1 949 250 0030  
Fax: +1 949 250 0031  
E-mail: [info@gaseng.net](mailto:info@gaseng.net)  
[www.gaseng.net](http://www.gaseng.net)